

## CD56NV-IR PTZ camera

Super Shock Proof Armored High Speed  
1/4" Sony EX-View PTZ - Day / Night, IP66 Weatherproof,  
IR up to 262.5 ft, 3.4-122mm lens  
(12V/24V - NTSC/PAL options)



**B056 Shock Mount Base**  
(Required for vehicle mounting)

### Features

- IR LEDs range up to 80m (262.5')
- Weatherproof Design, High die cast Aluminum Casing
- Super Shockproof especially for vehicle mounted surveillance
- 360° Pan Rotation and 180° Tilt rotation
- 128 presets

### Specifications

Image Sensor: 1/4" Sony EX-View CCD

Active Pixels: 752H x 582V

Synchronization: Internal

Video Output: VBS 1.0Vp-p /75 ohms

White Balance: Auto/Manual

Scanning Frequency: 60Hz (V)

Resolution: More than 480 Lines

S/N Ratio: More than 50dB

Electronic Shutter: 1/3~1/10000s

Lux: 0.01 Lux

Focal & Iris: Auto & Manual

Lens Focal Length: 3.4~122mm - F1.6 to F3.8 -Wide Dynamic SONY EX-VIEW 530 TVL, 36X - Sony FCB-EX1010 module

Zoom: 420x total (36X Optical, 12X Digital)

Minimum working distance: 320mm (Wide end) to 1800mm (Tele end)

Iris/Zoom: Auto / Manual

Tilt Speed: 0~40°/s

Pan Speed: 0~80°/s

Pan Rotation: 360°

Tilt Rotation: 90° (180° Auto Overturn)

Preset: 128

Patrol Function: 6 Patrol Patterns

Scanning Speed: 0.5 ~ 30° /s

R Illuminators pivot with camera to give you the IR beam where the camera is pointing

Infrared Illuminator: High Brightness LED x 40pcs

IR Wavelength: 850 nm

IR Project Distance: 80 m (262.5 ft)

IR Power Consumption: 1.6 W

Presets: 128 presets , 6 Tracks

Communication: Multiprotocol, Pelco D, Pelco P, Samsung etc., Baud rate from 2400Bps to 19200bps for optional RS485 control

Control of Infrared Lamp: Auto/Manual control on menu

Service Life of Infrared Lamp: Over 20000 hours

Alarm Four Channel Inputs: Normal Open, closing for alarm

Alarm One Channel Output: Normal Open, Normal Close Output

Power Supply: AC24V ± 10%

**Power Consumption: 30VA**

- During day time, sitting Idle - 24V30VA (2.0A)

- During day time, being used - Pan/Tilt/Zoom - 24V35VA (2.75A)

- During night time, sitting idle - 24V30VA (2.0A)

- With IR on - 24V30VA (3.0A)

- During night time, being used - Pan/Tilt/Zoom - 24V35VA (2.75A)

- With IR on - 24V30VA (3.0A)

Weight: 6Kg (13 lbs)

Installation Style: Normal Open, closing for alarm

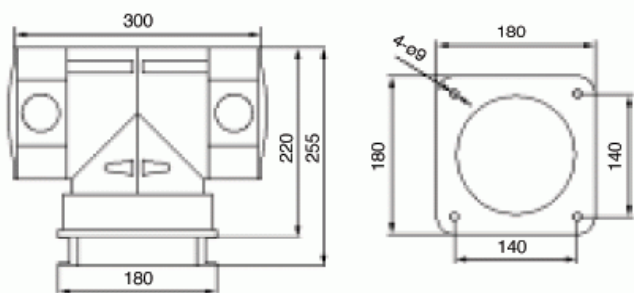
Alarm One Channel Output: Plain Base Installation/Vehicle-Carried

Relative Humidity: 10-90%

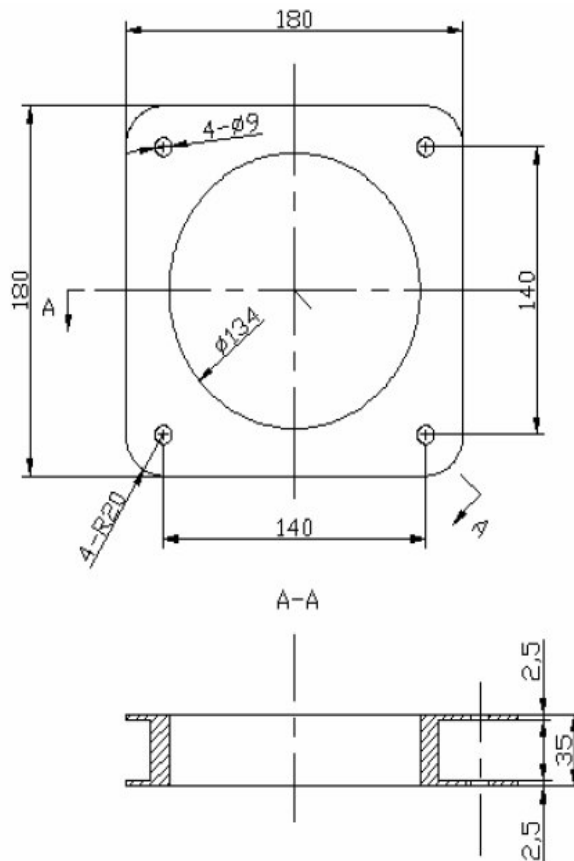
Operation Temperature: -35°C~55°C

Waterproof Class: IP66

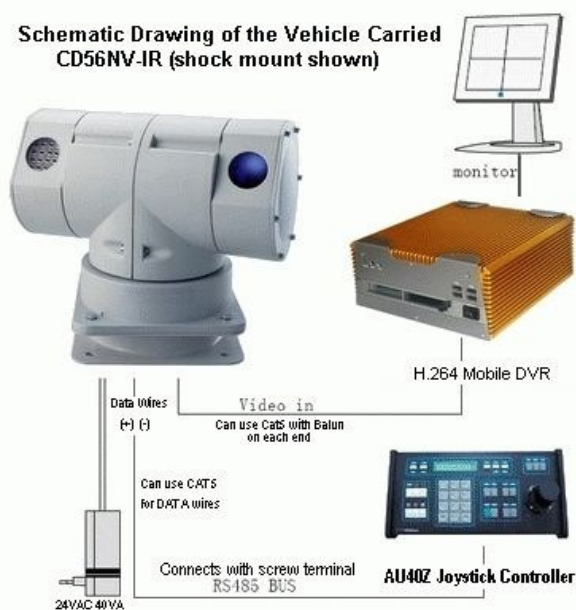
## Camera Dimensions



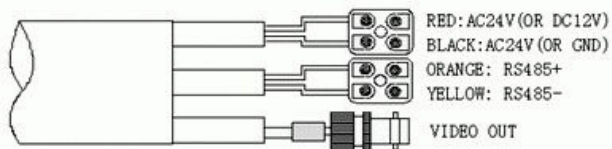
## Shock Mount Dimensions



## Schematic Drawing of the Vehicle Carried CD56NV-IR (shock mount shown)



## CD56NV-IR wire Connections



The shock mount base serves 2 purposes:

1. It absorbs the vibration from the vehicle and road conditions.
2. It provides a separation from the ground on the vehicle.