

ASH56NV-IR PTZ camera



B056 Shock Mount Base
(Required for vehicle mounting)

Features:

- Infrared with 300ft range
- Weatherproof design
- Ingress Protection (Anti-corrosion rating): IP66
- Wiper / Defogger
- Super Shockproof / Ruggedized / Armored
- Stepper motor for smooth Pan and Tilt
- Suitable for vehicle mount surveillance
- (12V/24V - NTSC/PAL options)

Specifications:

Image Sensor: 1/4" Sony EX-View CCD

Active Pixels: 752H x 582V

Synchronization: Internal

Video Output: VBS 1.0Vp-p /75 ohms

White Balance: Auto/Manual

Scanning Frequency: 60Hz (V)

Resolution: More than 480 Lines

S/N Ratio: More than 50dB

Electronic Shutter: 1/3~1/10000s

Lux: 0 Lux (LED Open)

Lens Focal Length: 3.4~122mm - F1.6 to F3.8 - Wide Dynamic -

SONY EX-VIEW 530 TVL, 36X - Sony FCB-EX1010 module

Focal & Iris: Auto/Manual

Zoom: 420x total (36X Optical, 12X Digital)

Minimum working distance: 320mm (Wide end) to 1800mm (Tele end)

Zoom Speed Movement (NTSC/PAL):

- Optical Wide/Optical Tele 4.0sec
- Optical Wide/Digital Tele 6.0/6.2sec
- Digital Wide/Digital Tele 2.1/2.3sec

Pan Preset Speed: 100°/s

Tilt Preset Speed: 60°/s

Pan Speed: 0°~80°/s

Tilt Speed: 0°~40°/s

Pan Rotation: 360° continuous

Tilt Rotation: 0-180°

Stepper motor for smooth Pan and Tilt

Preset: 128 presets

Control: Multiprotocol - Pelco-P, Pelco-D etc...

RS485 Baud rate from 2400~19200Bps

Power Supply: DC10.5V ~ DC18V (50VA) (optional) AC24V (60VA)

Power Consumption:

- Camera Module only: 5W
- During day time, sitting Idle: 24V30VA (2.0 Amps, 18W. No IR and no PTZ movement)
- During day, being used...Pan / Tilt / zoom: 24V35VA (2.75 Amps, 24~30W)
- During night time, sitting idle: 24V30VA (2.0 Amps)
- During night time, being used...Pan / Tilt / zoom - 24V35VA (2.75 Amps)
- Anytime movement and with IR ON - 24V30VA (3.0 Amps)
- Heater Consumption: 4W
- Wiper Consumption: 3W

Relative Humidity: 90% without agglomeration

Work Temperature: -35°C~55°C

Power Source: DC10.5VA ~ DC18V (50VA)

Wind Load rating: 90 Mph

Shock: >4G

Weight: 6Kg

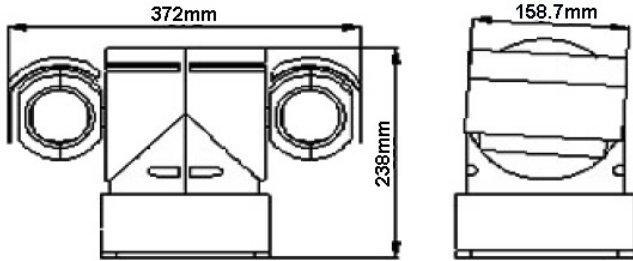
Waterproof Class: IP66

Wall Mount Bracket Included, optional shock mount base

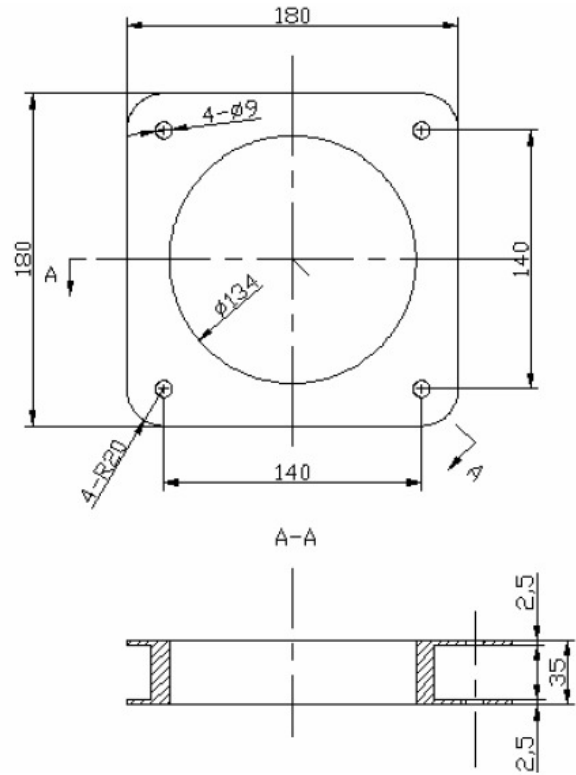
Shock Mount Base

- Dimensions: 180 x 180 x 35mm
- Acceleration: 100m/S2
- Pulse Duration: 16ms, repetition rate (60-80) time/min
- Shock time: (1000+-10) times

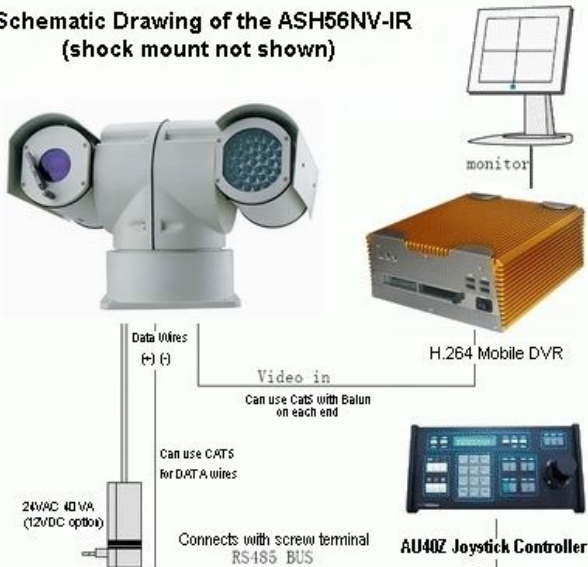
Camera Dimensions:



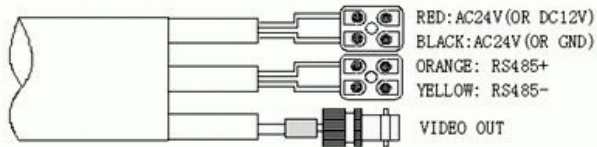
Shock Mount Dimensions:



Schematic Drawing of the ASH56NV-IR (shock mount not shown)



ASH65NV-IR wire connections



The shock mount base serves 2 purposes:

1. It absorbs the vibration from the vehicle and road conditions.
2. It provides a separation from the ground on the vehicle.